



Engineered for life

Enidine

105 Commerce Way
Westminster, SC 29693

Tel: (864) 647-9521

Fax: (864) 647-7993

PRD Kit Installation – Capture Pipe Style p/n PRDKIT-1A, -1B, -1C

1. Prior to any disassembly, clean the area around the existing PRD, fully bleed system pressure and verify system is depressurized.
2. Remove vent line connection hardware from the PRD capture pipe.
3. Remove PRD capture pipe by unscrewing it from the regulator in a counterclockwise direction with a 5/8" wrench.
4. Remove and discard the PRD spring.
5. Remove and discard the PRD poppet. This part slips into the bore and is held against the bottom by the spring previously removed. If the part does not freely come out with a dull instrument, air pressure applied to the outlet line attached to the regulator may be used to eject the part from the regulator body.

CAUTION: The PRD poppet may be ejected with substantial velocity if stuck. A dull instrument can be used to rotate the PRD in the bore to loosen it and reduce the air pressure required to eject it.

6. Install the new PRD poppet in the body.
7. Install the new PRD spring into the poppet.
8. Install the PRD capture pipe into the regulator by compressing the PRD spring and screwing the part in a clockwise direction.
9. Tighten the PRD capture pipe to 180 in-lb with a 5/8" wrench.
10. Connect vent line connection hardware to the PRD capture pipe, while supporting the PRD capture pipe with a 5/8" wrench.
11. Verify all connections and commission system. Check for leakage.

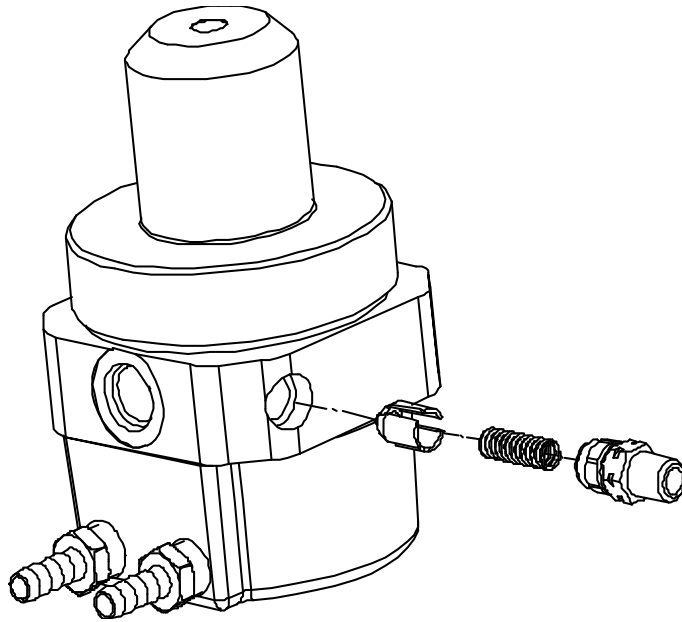


Figure 1 - PRDKIT-1 Installation into HPNGV Regulator

PRD Kit Installation - Atmospheric Discharge Style p/n PRDKIT-2A, -2B, -2C

1. Prior to any disassembly, fully bleed system pressure, clean around the existing PRD, and verify system is depressurized. Remove plastic dust cover from the spring retainer by prying it out of the recess with a sharp instrument. See Figure 2.
2. For product with a plastic PRD retainer screw only:
Press the stamped retainer removal tool firmly into the plastic retainer and unscrew the retainer by turning the tool counterclockwise with a $\frac{3}{4}$ " or 19mm wrench. See Figure 3.

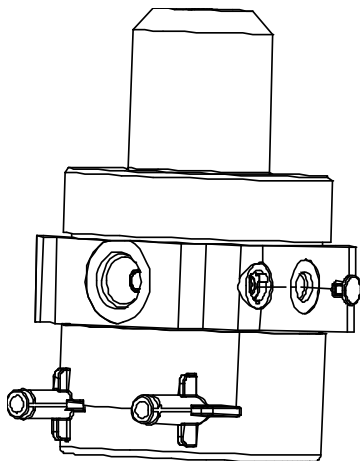


Figure 2 - PRD dust cover removal

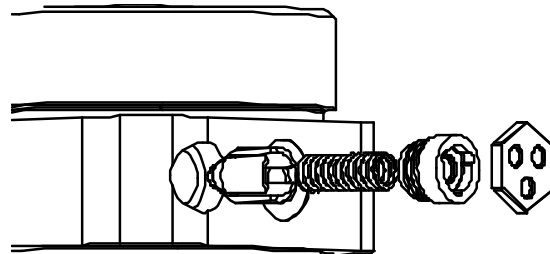


Figure 3 - PRD removal using supplied tool

3. For product with an aluminum PRD spring retainer screw only:
Remove the PRD retaining screw by turning the part *counterclockwise* with a screw extractor. See Figure 4.

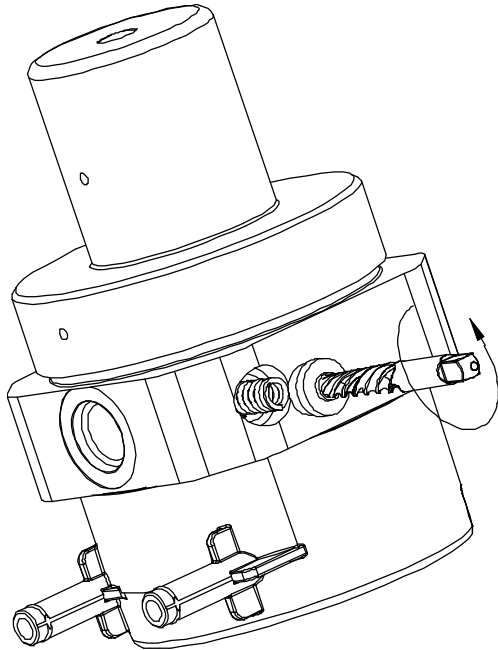


Figure 4 – Removal of aluminum PRD retainer screw with a screw extractor.

4. Remove and discard the PRD spring retainer, and spring.
5. Remove and discard the PRD poppet. This part slips into the bore and is held against the bottom by the spring previously removed. If the part does not freely come out with a dull instrument, air pressure applied to the outlet line attached to the regulator may be used to eject the part from the regulator body.

CAUTION: The PRD poppet may be ejected with substantial velocity if stuck. A dull instrument can be used to rotate the PRD in the bore to loosen it and reduce the air pressure required to eject it.

6. Install a new PRD poppet in the body.
7. Install the new PRD spring into the poppet.

8. Install the new PRD spring retainer into the regulator by compressing the PRD spring and screwing the part in a clockwise direction. See figure 5.

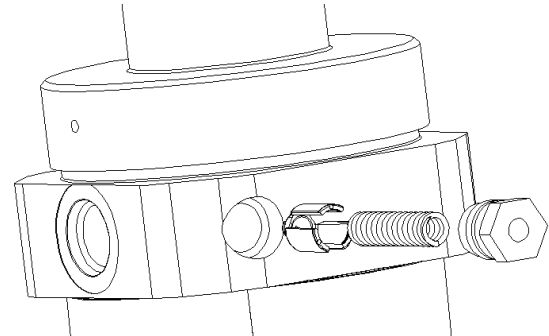


Figure 5 – Installation into regulator body

9. Tighten the PRD spring retainer until it fractures at the groove. This fracture will be below flush to the regulator body.
10. Install a new plastic dust cover by snapping it into the hole of the fractured PRD spring retainer. This is shown in figure 6.

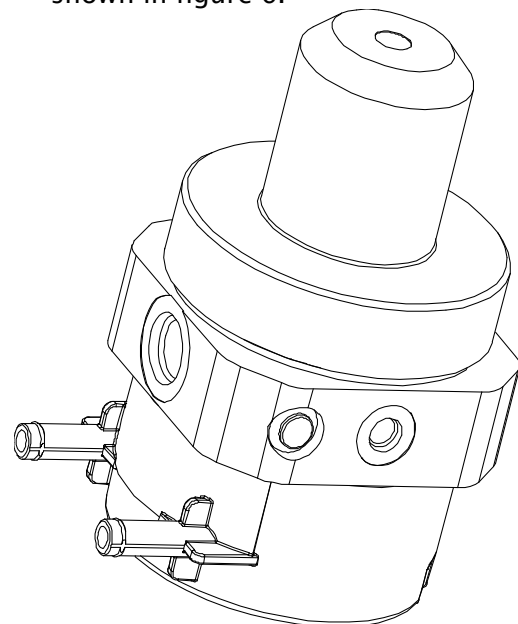


Figure 6 – Regulator with new PRD installed

11. Verify all connections and commission system. Check for leaks.